



**ALASKA DIVISION OF HOMELAND SECURITY &
EMERGENCY MANAGEMENT**



SITUATION REPORT 22-035 • FEBRUARY 04, 2022

Toll-Free 1.800.478.2337

Anchorage Area 907.428.7000

SEOC 907.428.7100

<p><u>SEOC Preparedness Level</u> Level 2 – Heightened Awareness</p>	<p>http://ready.alaska.gov</p>	<p><u>National Terrorism Advisory System:</u> Read the updated NTAS Bulletin here</p>
<p><u>Maritime Security (MARSEC)</u> Level: 1-Minimum Appropriate Security Measures</p>	<p>WHO Novel Coronavirus Pandemic (COVID-19): 2019 Novel Coronavirus</p>	<p><u>Alaska Military Installation Force Protection Level:</u> FPCON Bravo</p>

(Significant changes from previous situation reports are in red.)

Significant Issues:

SEOC at Level 2 – *Heightened Awareness* – Statewide Severe Weather Impacts

The State Emergency Operations Center (SEOC) remains activated in a hybrid virtual/in-person Incident Command structure to manage the current state declared disaster responses and other incidents arising statewide.

Interior Storm - Due to staff illness, Disaster Assistance Center (DAC) operations have been paused at this time. DHS&EM will NOT be opening the DAC in Delta Junction today as scheduled nor in Fairbanks as scheduled next week. The future DAC schedule is to be determined. Online registration for Individual Assistance is still available at <https://ready.alaska.gov/>.

Threat Level Changes:

None

State of Alaska Department of Health and Social Services (DHSS)

DHSS is now leading the State of Alaska COVID-19 Recovery through Department Operations, supported by SEOC and other state departments as required.

For current COVID-19 information, see:

<https://covid19.alaska.gov/>

<https://www.cdc.gov/coronavirus/2019-ncov/index.html>

NTAS BULLETIN

To read current or expired advisories, click the link below:

<https://www.dhs.gov/national-terrorism-advisory-system>

Travel Alerts and Conditions

For current driving conditions dial 511 or link to <http://511.alaska.gov/>

Barry Arm Landslide / Tsunami Risk

For the latest information on the Barry Arm Landslide and Tsunami risk, click here:
[DGGG Barry Arm Landslide and Tsunami Hazard](#)

Recent Earthquakes

USGS Earthquake Information: <http://earthquake.usgs.gov/>

National Tsunami Warning Center: <http://tsunami.gov/>

Alaska Volcanoes

Davidof Alert Level: **Advisory** and Aviation Color Code: **Yellow**

Great Sitkin Alert Level: **Watch** and Aviation Color Code: **Orange**

Pavlof Alert Level: **Watch** and Aviation Color Code: **Orange**

Semisopchnoi Alert Level: **Watch** and Aviation Color Code: **Orange**

For Alaska Volcano updates, go to: <https://www.avo.alaska.edu/>

Air Quality Index (AQI) Advisories

For the most up to date Air Quality Index Advisories:

<http://dec.alaska.gov/Applications/Air/airtoolsweb/Home/Index>

Spills of Oil and Hazardous Substances

The ADEC Spill Prevention and Response page is located at:

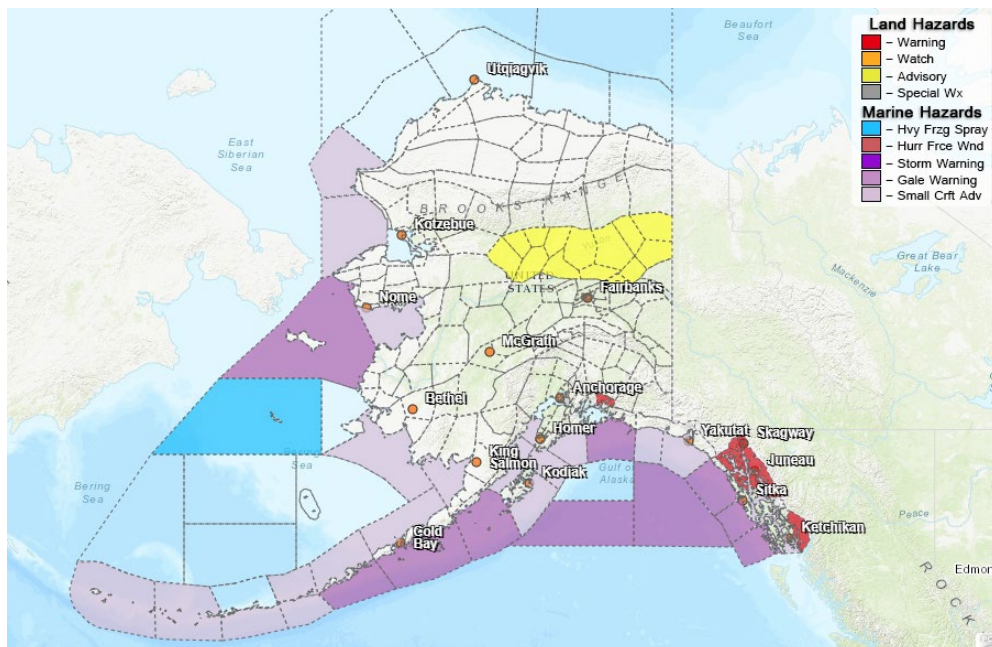
<http://dec.alaska.gov/spar/ppr/spill-information/response/>

Alaska Cyber Security Information

State Employees may sign up for cyber security notifications and alerts at

<https://oit.alaska.gov/security>

Significant Weather:



Blizzard Warnings have been issued for the following areas:

- Thompson Pass – expiring at 9 AM today.

Winter Storm Warnings remain in effect for the following areas:

- Misty Fjords including Hyder – extended until 6 AM tomorrow. Up to 10 inches of additional accumulation and freezing rain possible.
- Haines Borough and Lynn Canal, Taiya Inlet and Klondike Highway, including Haines and Skagway – until 6:00 PM today. Total accumulation of 8 to 15 inches.
- Juneau, Gustavus and Hoonah – until noon today. Additional accumulation of 1 to 4 inches.

Winter Weather Advisories remain in effect for the following areas:

- Upper Koyukuk Valley (primarily Dalton Highway Summits and near Indian Mountain) – until noon today. Blowing and drifting snow.
- Yukon Flats and Surrounding Uplands (primarily Steese and Dalton Highway Summits, and in the White Mountains) – until noon today. Blowing and drifting snow.

For more information and the most current weather, Watches / Warnings / Advisories go to:

<http://www.weather.gov/arh>.

Avalanche Forecast:



There are areas near Cordova, Thompson Pass and Valdez with moderate risk and areas near Haines and Chilkat Lake with considerable risk.

Check the Avalanche Forecast Center closest to your area for the most up to date information on avalanche potential. <https://alaskasnow.org> or <https://www.weather.gov/afc/avalancheweather>

The Next Situation Report: will be 07 February 2022. A significant change in the situation or the threat level will prompt an interim report.

This report is posted on the internet at <https://ready.alaska.gov/sitrep>. To register for email distribution, go to <http://list.state.ak.us/mailman/listinfo/dhsem.situation.report>. Direct questions regarding this report to the SEOC at 907-428-7100 or seoc@alaska.gov